

Supplementary Information of Boreal Env. Res. Vol. 31: 13–23, 2026
© Author(s) 2026. This work is distributed under the Creative Commons Attribution 4.0 License.

Supplementary Information of

Changes in a coastal fish community following reed removal to increase reed-water interface

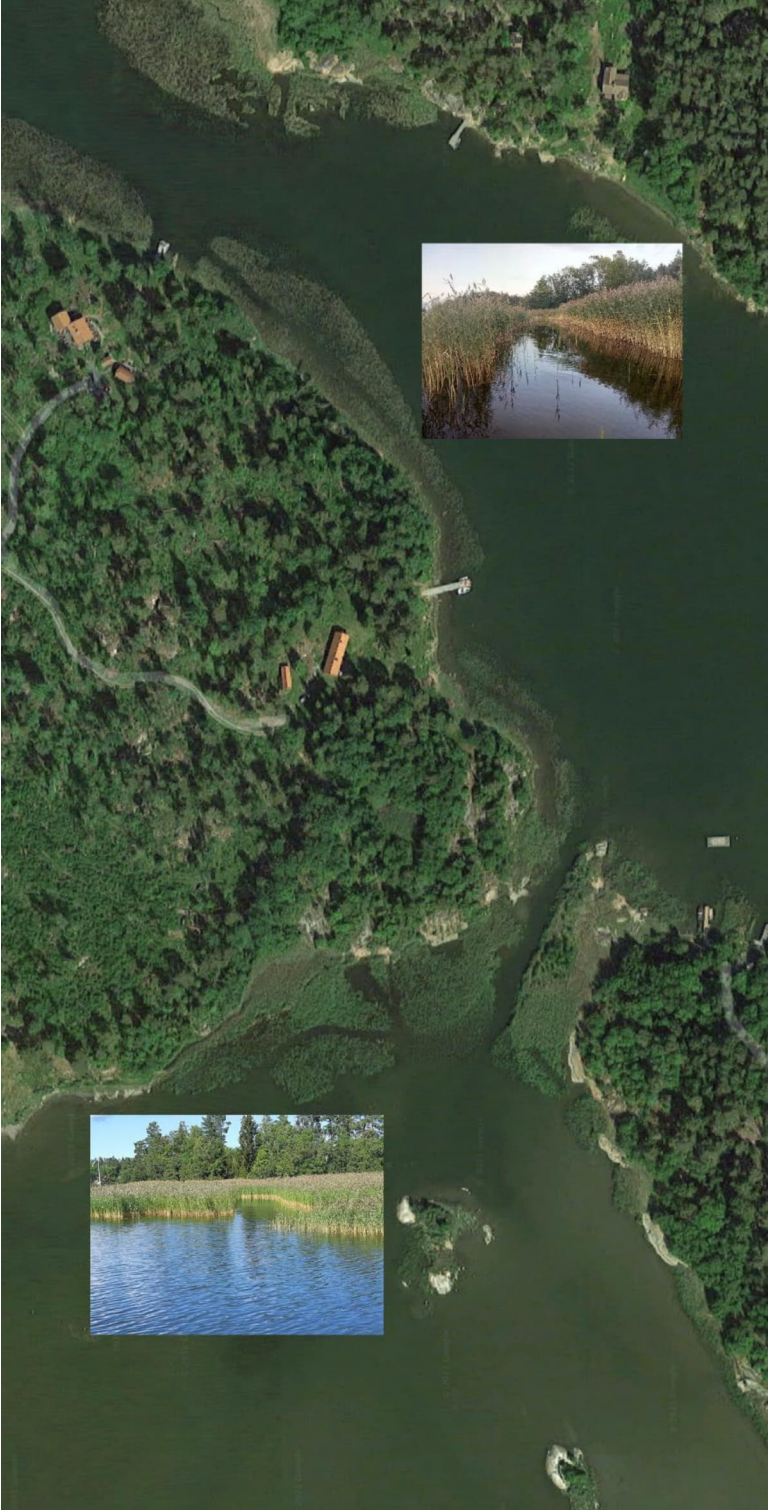
Östman et al.

Correspondence to: Örjan Östman (orjan.ostman@slu.se)

The copyright of individual parts of the supplement might differ from the CC BY 4.0 License.

Supplementary Figure S1:

Aerial photo of the reed beds in Österby- and Västerbyfjärden after reed cutting where channels and lagoons are visible in the reed beds. Inserted photos show how the channels and lagoons may look from the surface after cutting.



Suppl. Fig. S2. QQplots from the statistical models.

